

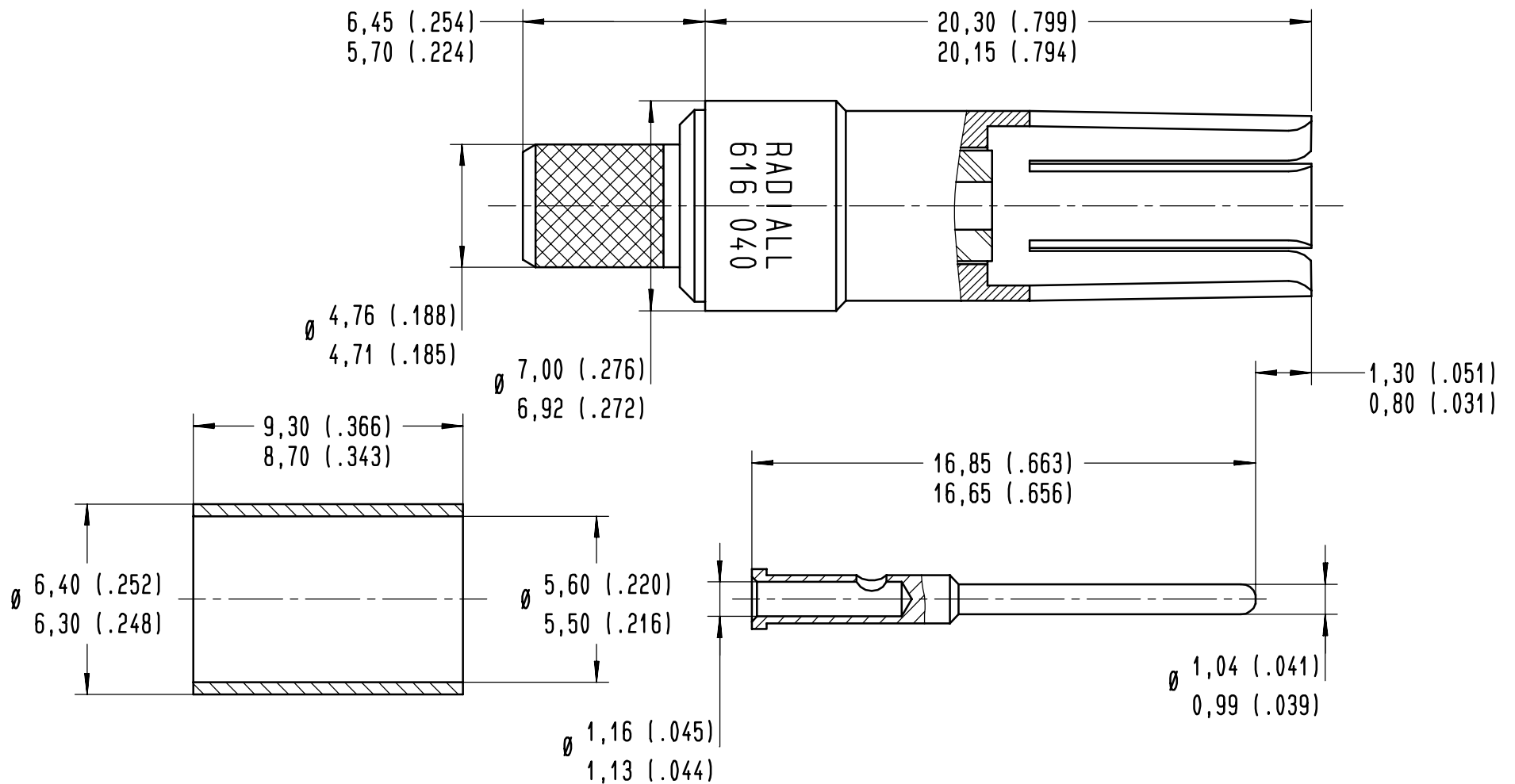


Series  
DSX

SIZE 9 COAXIAL SOCKET CONTACT  
FOR RG58 ,RG141 AND KX15 CABLES

Issue:  
14 JUNE 00

Page  
1 / 1



**MATERIAL:**

OUTER CONTACT: BERYLLIUM COPPER PER ASTM-B-194  
INSULATOR: PTFE PER ASTM-D-1710 OR EQUIVALENT  
CENTER CONTACT, CRIMP BARREL AND FERRULE: COPPER ALLOY PER QQ-B-626

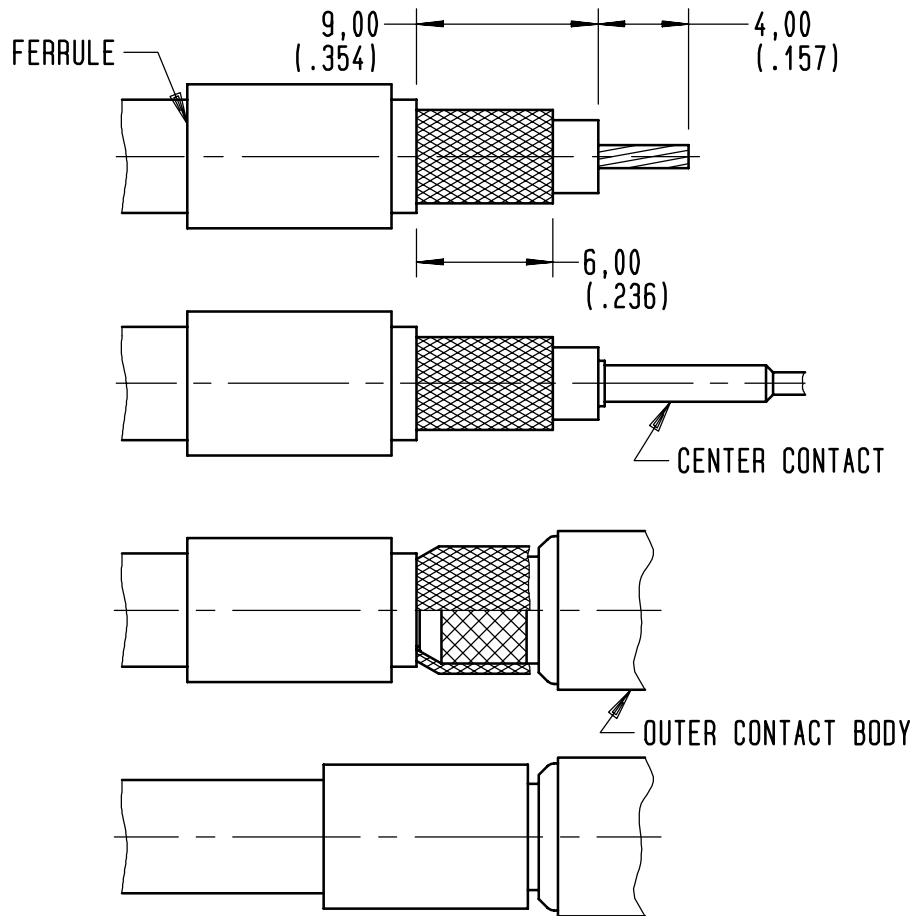
**FINISH:**

ALL METALIC PARTS: .00005 OF GOLD PER MIL-G-45204 TYPE I OR II  
GRADE C OR D, CLASS 1 OVER NICKEL PER QQ-N-290

**DESIGN REQUIREMENTS**

TEMPERATURE RANGE: -65°C TO +125°C  
IMPEDANCE: 50 OHMS NOMINAL  
VSWR: 1.30 from DC to 1500 MHz  
DIELECTRIC WITHSTANDING VOLTAGE: 750 VRMS AT SEA LEVEL

EXTRACTION TOOL : 282946 (M81969/28-01)(ORDER SEPARATLY)



STRIP CABLE TO DIMENSIONS SHOWN ABOVE  
SLIDE FERRULE OVER THE CABLE

SLIDE CENTER CONTACT BARREL OVER CABLE CONDUCTOR  
CONTACT SHOULDER BUTTING AGAINST CABLE DIELECTRIC  
CRIMP CENTER CONTACT  
CRIMPING TOOL M22520/2-01 RADIAL 282281  
SELECTOR ON: 6 POUR RG58 et KX15  
8 POUR RG141  
POSITIONER: K345 RADIAL 282550

FLARE BRAID, INSERT CENTER CONTACT INTO THE OUTER  
CONTACT BODY  
PLACE BRAID OVER KNURLED PART OF OUTER CONTACT BODY

SLIDE FERRULE OVER BRAID UNTIL IT BUTTS AGAINST SHOULDER  
OF OUTER CONTACT BODY  
CRIMP FERRULE  
CRIMPING TOOL: M22520/5-01 RADIAL 282293  
DIE: M22520/5-05 RADIAL 282246 HEX.A 5,4 (.212) /FLATS

CREATION				
PEN: .				
NOM: JP MACARI				
DATE: 07 MAY 82	14JUNE00	DRAWING ENGLISH	GOMBERT	.
APPR.: .	Issue	Revisions	Name	Approved

4112-9610

A616040